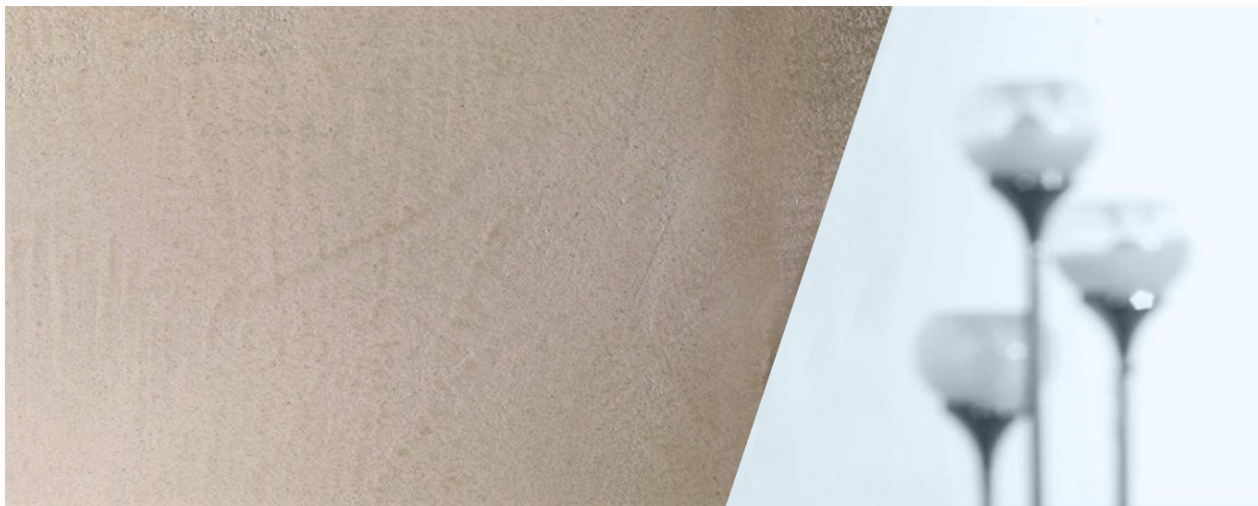


MARMORIN SAND



FINISHES



PRODUCT DESCRIPTION

Description Decorative slaked lime-based finish with a marbled effect.

Intended use Indoor/Outdoor

- Particularly suitable for restoration work on old buildings of historic and monumental character
- Homogeneous, absorbent and seasoned lime-based or lime cement-based new or old and worn mineral substrates

Main features



- Marble effect
- High water vapour permeability
- Shaded appearance with chiaroscuro effects and haloing
- Excellent fire resistance
- Formula A+

Main technical data

Technical information	Method	Main data at 20°C and 60% of R.H.
Theoretical consumption for two coats	ISO 7254	2÷2.2 kg/m ²
Vapour permeability	ISO 7783-2	V1
Water absorption	UNI EN 1062-3	W1

Available colours

White and other colours achievable with the tintometric system. For colour selection, refer to the Color Collection Marmorini chart

LAYING

Dilution and preparation of the product

The product is ready to use, mix properly with a mechanical mixer until it reaches the correct density.

Warning: as it is a lime product, it naturally tends to thicken; mixing is therefore recommended for proper applicability.

Application tools

Stainless steel spatula

Preparation of the substrate (external and internal)

NEW WALL SURFACES

Concrete, plasterboard and cement-based plasters: make sure that the substrate is perfectly seasoned; always apply at least one coat of MULTIQUARTZ base coat to regulate absorption and wait for it to dry completely. Alternatively, if greater adhesion is required, it will be possible to apply a coat of VIEROGRIP PLUS and wait 24h before applying the decorative finish.

OLD SURFACES ALREADY PAINTED OR PARTIALLY DEGRADED

In case of dirt and mould, before carrying out any operation, it is necessary to perform a treatment with specific anti-mould sanitising products, taking care to leave them to act before carrying out a suitable cleaning.

Carry out a careful scraping (mechanical or manual) in order to remove every element that is detaching or in any case is not perfectly cohesive and anchored to the substrate; assess if the complete removal of old paint is necessary.

In case of dusting and chalking of external surfaces, it is necessary to apply a coat of PRYMER SE consolidating solvent-based fixative or of PRYMER ACQ 100 high penetration water-based acrylic fixative, and wait 24h. Then proceed to apply the base paint which can be MULTIQUARTZ or VIEROGRIP PLUS depending on the uniformity and filling required and wait 24 hours before applying the decorative finish.

In case of dusting and chalking of internal surfaces, apply a coat of PRYMER ACQ water-based acrylic fixative and wait at least 6-8 h. Then proceed to apply the base paint which can be MULTIQUARTZ or VIEROGRIP PLUS depending on the uniformity and filling required and wait 24 hours before applying the decorative finish.

WALL SURFACES WITH LIME PLASTER OR CEMENT-LIME MORTAR

In case of dusting and chalking, it is necessary to apply a coat of SILICA FONDO SD; after 24h proceed to apply a coat of VIEROGRIP PLUS and wait at least another 24h before applying the decorative finish.

In the case of a cohesive and anchored mineral substrate, it will be sufficient to wet the surfaces with water and to proceed to apply the decorative finish.

Application system

Apply two coats of MARMORIN SAND with a stainless steel spatula 24 hours apart.

To obtain a plaster-like finish, finish off with a sponge float with circular movements.

To obtain a smooth and translucent finish, the second coat must be pressed, with movements from top to bottom and vice versa, perfectly compacting the surface, with a stainless steel trowel with rounded corners and rounded edge, inclined at 45°.

It is possible to protect and waterproof the surfaces immediately after the second coat of MARMORIN SAND has dried, as follows:

on external surfaces by overapplying the L105 lime finishing solution, or with the VIERO VEL siloxane water-repellent protective product, on a perfectly dry substrate;

on internal surfaces by overapplying the SAPONIL or NATURWAX ECO solutions for lime finishes, or the VIERO VEL siloxane protective water-repellent, on a perfectly dry substrate.

- Dry in depth: 24 h
- seasoning takes 2-3 weeks (60-70% of lime)
- the complete seasoning process takes 8-12 months
- Overcoatability: after 12-24 hours

Conditions of application

- Relative humidity of the environment: <75%
- Ambient temperature: min. +5°C / max. +35°C
- Substrate temperature min. +5°C / max. +35°C
- Apply on homogeneous substrates, complete the walls without stopping, avoid the recovery of material that is now dry
- Do not apply on substrates with rising damp

Practical advice

- Avoid application of the product in direct sun or on particularly windy days
- In the case of very large surfaces, provide for suitable interruptions near drainpipes or technical joints
- Store the product in its original container at a temperature between +5°C and +30°C
- Faint hues and shading of the colour (lighter and darker) are an aesthetic characteristic, typical of the product
- Due to the natural composition of the product, the final shade will be affected by climatic conditions and by the plaster absorption rates
- After application, the surfaces must be protected from driving rain for at least 48 hours
- Apply a single batch on the same side or request a continuing batch
- With the construction site in progress, to limit the visibility of interruptions, consider proceeding along the wall with diagonal rather than vertical work sequences
- Given the natural composition of the product, the final colour will have a shaded appearance with chiaroscuro effect and haloing depending on the different absorption of the plasters, on the climatic conditions and the application methods

Known incompatibilities The product cannot be applied to wooden substrates.
In the case of surfaces already painted with synthetic paints and plaster substrates, apply suitable primers, such as PRYMER ACQ fixative and MULTIQUARTZ base coat.
For any use other than that indicated in this technical data sheet, contact our Technical Assistance Service.

Cleaning of tools With water immediately after use.

- Safety Precautions**
- The product is very alkaline. Protect your eyes during use and in case of contact wash thoroughly with water and consult your doctor
 - Keep the container tightly closed after use, away from heat sources, away from frost and direct sunlight
 - The safety information for the user is contained in the relevant safety data sheet
 - Empty containers or containers with slight traces of dried film of residual product must be disposed of in compliance with local regulations

- Warnings**
- The final shade of the applied product depends on the porosity and absorption of the substrate, as well as on the thicknesses applied
 - We advise to check the colour after the plaster has completely dried
 - Faint hues and shading of the colour (lighter and darker) are an aesthetic characteristic, typical of the product
 - Due to the natural composition of the product, the final shade will be affected by climatic conditions and by the plaster absorption rates
 - As it is a natural product, the mixture may contain undercooked or not hydrated limestone fragments
 - Given the natural composition of the product, the final shade will be influenced by the natural conditions of the quarry from which it will be extracted

OTHER INFORMATION

Classification (UNI EN 1062-1) G0 E5 S3 V1 W1 A0 C0

VOC classification (Directive 2004/42/EC) Matt paints for indoor walls and ceilings.
EU VOC limit for MARMORIN SAND (cat. A/a): 30 g/L (2010).
MARMORIN SAND contains a maximum of 30 g/L of VOC.

Other technical information

Technical information	Method	Main data at 20°C and 60% of R.H.
Density	ISO 2811-1	approx. 1.40 g/ml
Brookfield viscosity	ASTM D 2196	approx. 55000 cps

Dry film thickness per coat		Approx. 800 µm
Flash point	UNI 8909	Non-flammable
Storage life	UNI 10154	At least 12 months
Adhesion (> 0.3 Mpa)	EN1542	0.3
Durability (> 0.3 Mpa)	EN13687-3	0.3
Thermal conductivity ρ=50% (W/ m * K)	EN 1745:2002 Table A12	0.83
Thermal conductivity ρ=90% (W/ m * K)	EN 1745:2002 Table A12	0.93
Reaction to fire (Euro class)	EN 13501-1	F
Binder		Lime

ITEM SPECIFICATIONS

Application of MARMORIN SAND, marble effect finish.

Slaked lime-based MARMORIN SAND - in the colour chosen by the P.M. – is a smooth finish that can be applied using a stainless steel spatula. Two coats must be applied on walls of a mineral nature that have never been painted or on walls that have been painted with mineral products or suitably prepared with a suitable primer.

Indicative consumption for two coats 2÷2.2 Kg/ m².

Price on site € _____ per m² including materials, labour, and excluding scaffolding, protections and any surface preparation.

All the technical indications contained herein are the result of our best experience, are indicative and do not constitute a guarantee of results. The data and methods shown on this technical data sheet can be modified at any time depending on any change in production technologies. The application of the products takes place outside our control and therefore falls under the sole responsibility of the customer. The correct use of the materials assumes compliance with the general requirements for use set out in the GENERAL CONSIDERATIONS page of the PRODUCT INFORMATION SHEETS collection and in particular with what is indicated in this sheet, especially with regard to the preparation and suitability of the supports. The technical service of Cromology Italia spa is available to users to provide additional information to that reported here. THIS DATA SHEET REPEALS AND REPLACES ANY PREVIOUS EDITION.

CROMOLOGY ITALIA SpA ORGANISATION WITH QUALITY, SAFETY AND ENVIRONMENTAL MANAGEMENT SYSTEM ISO 9001, OHSAS 18001, ISO 14001 CERTIFIED BY BUREAU VERITAS SpA.

FOR PROFESSIONAL USE